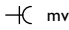
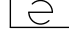
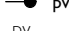
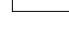
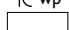

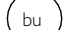


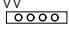


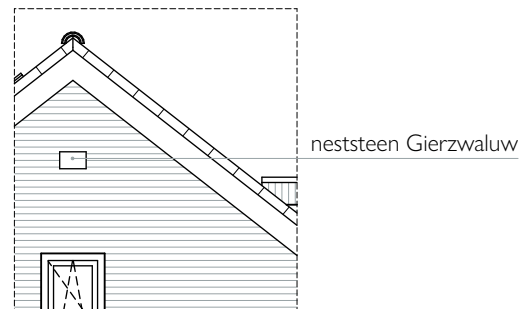
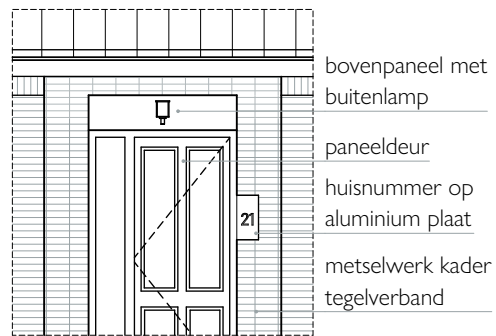
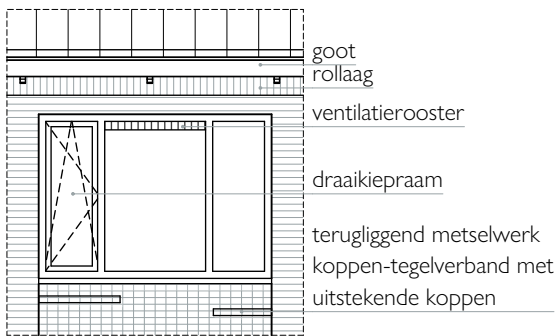
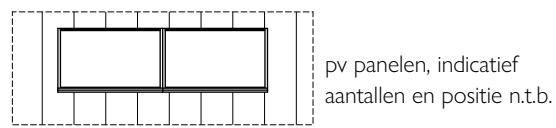


Renvooi

	bel
	drukknop bel
	wandlichtpunt
	plafondlichtpunt
	schakelaar - enkelpolig
	schakelaar - wissel
	schakelaar - serie
	wandcontactdoos
	wandcontactdoos - dubbel
	wandcontactdoos - wasmachine
	wandcontactdoos - wasdroger
	wandcontactdoos - afzuigkap
	wandcontactdoos - koelkast
	wandcontactdoos - vaatwasser
	wandcontactdoos - magnetron
	aansluitpunt kooktoestel perilex (2x230V)
	loze leiding - telefoon / cai / data
	thermostaat
	sensor mechanische ventilatie

	aansluitpunt mechanische ventilatiebox
	mechanische ventilatiebox
	aansluitpunt PV installatie
	positie omvormer PV
	aansluitpunt warmtepomp
	positie warmtepomp
	buffervat
	radiator, elektrisch incl. wandcontactdoos
	rookmelder (aangesloten op lichtnet) conform NEN 2555
	verdeler vloerverwarming
	meterkast
	matomranding



DOUMA
RAALTE

Bouwnummer:
64

Datum:
22-12-2023

renvooi



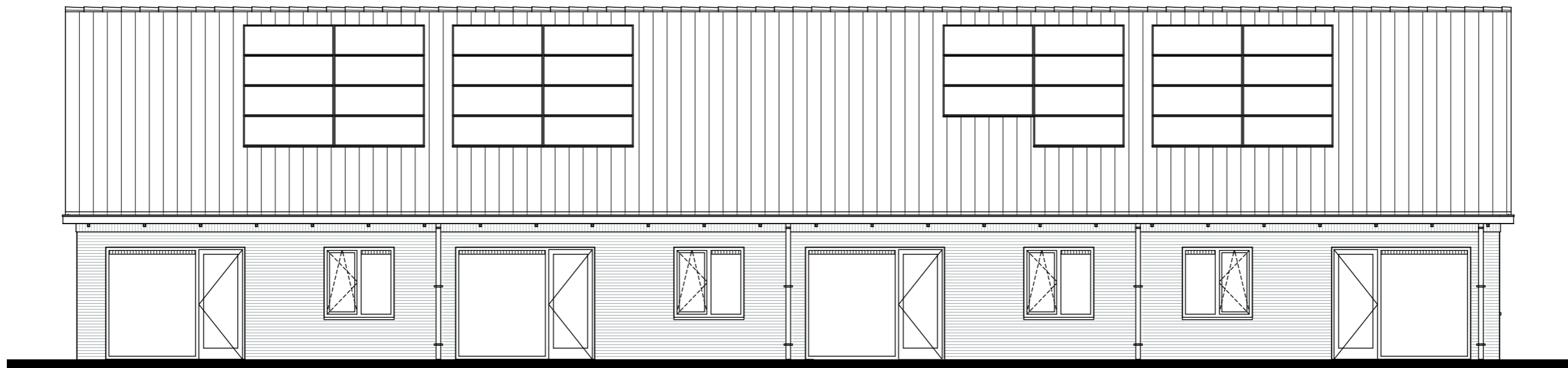
bouwnummer 62

bouwnummer 63

bouwnummer 64

bouwnummer 65

Vorgevel



bouwnummer 65

bouwnummer 64

bouwnummer 63

bouwnummer 62

Achtergevel

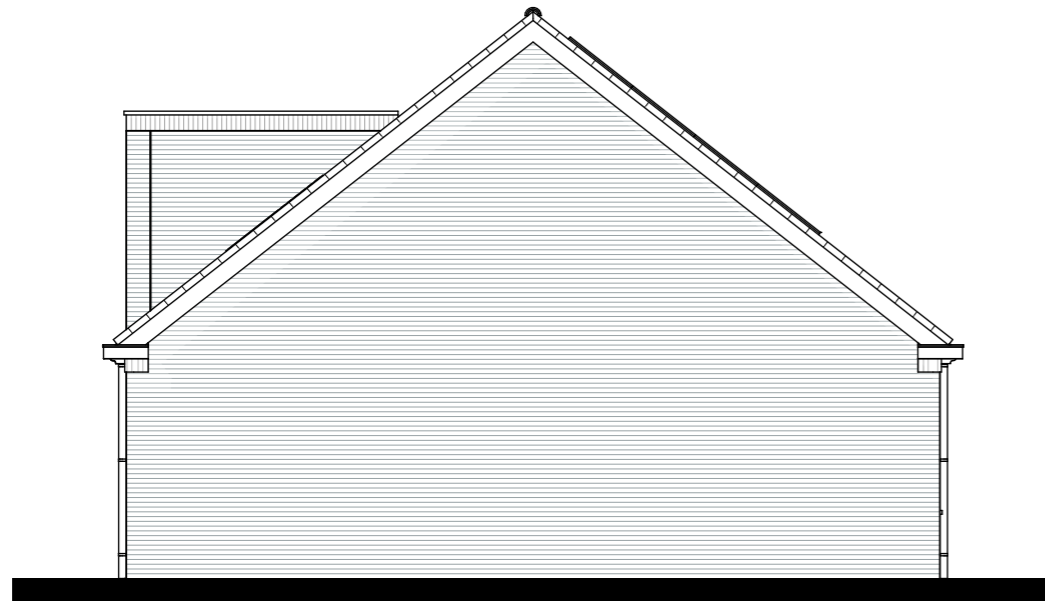
DOUMA
RAALTE

Bouwnummer:
64

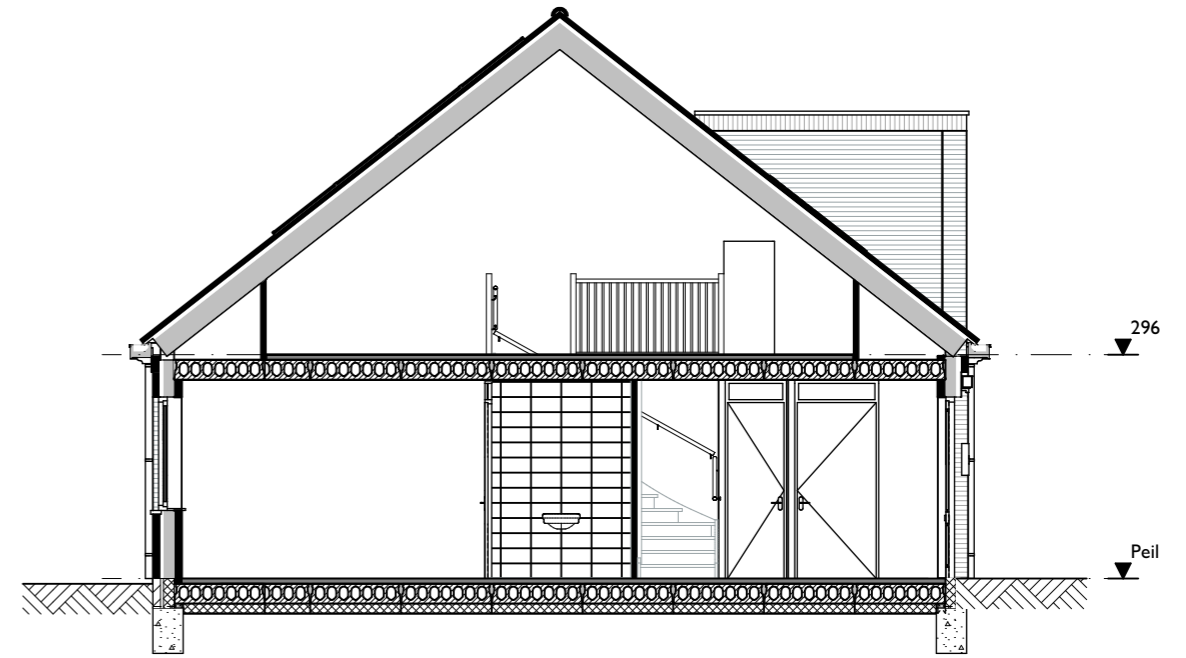
Datum:
22-12-2023

Schaal:
1:100

voor- en achtergevels



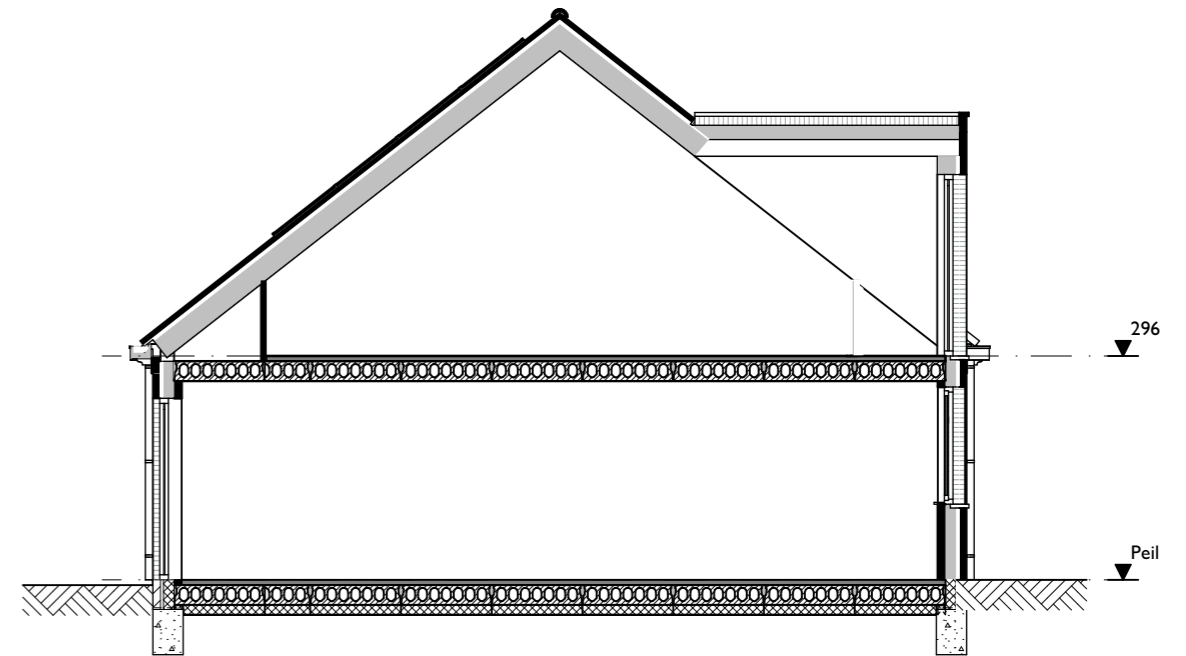
bouwnummer 65
Rechtergevel



Doorsnede A-A



bouwnummer 62
Linkergevel

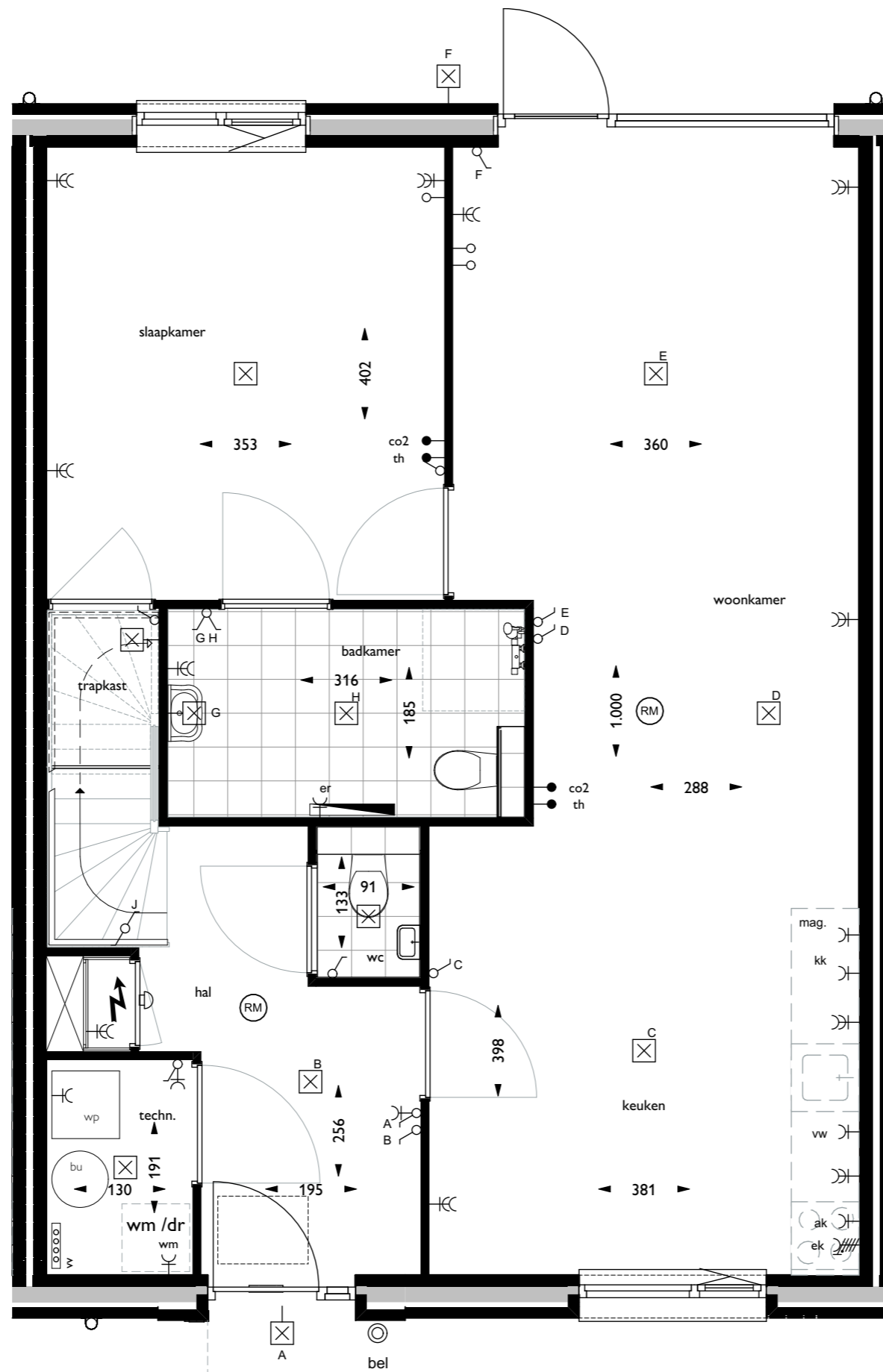


Doorsnede B-B



Bouwnummer: 64 **Datum:** 22-12-2023 **Schaal:** 1:100

zijgevels en doorsneden



bouwnummer 64

begane grond

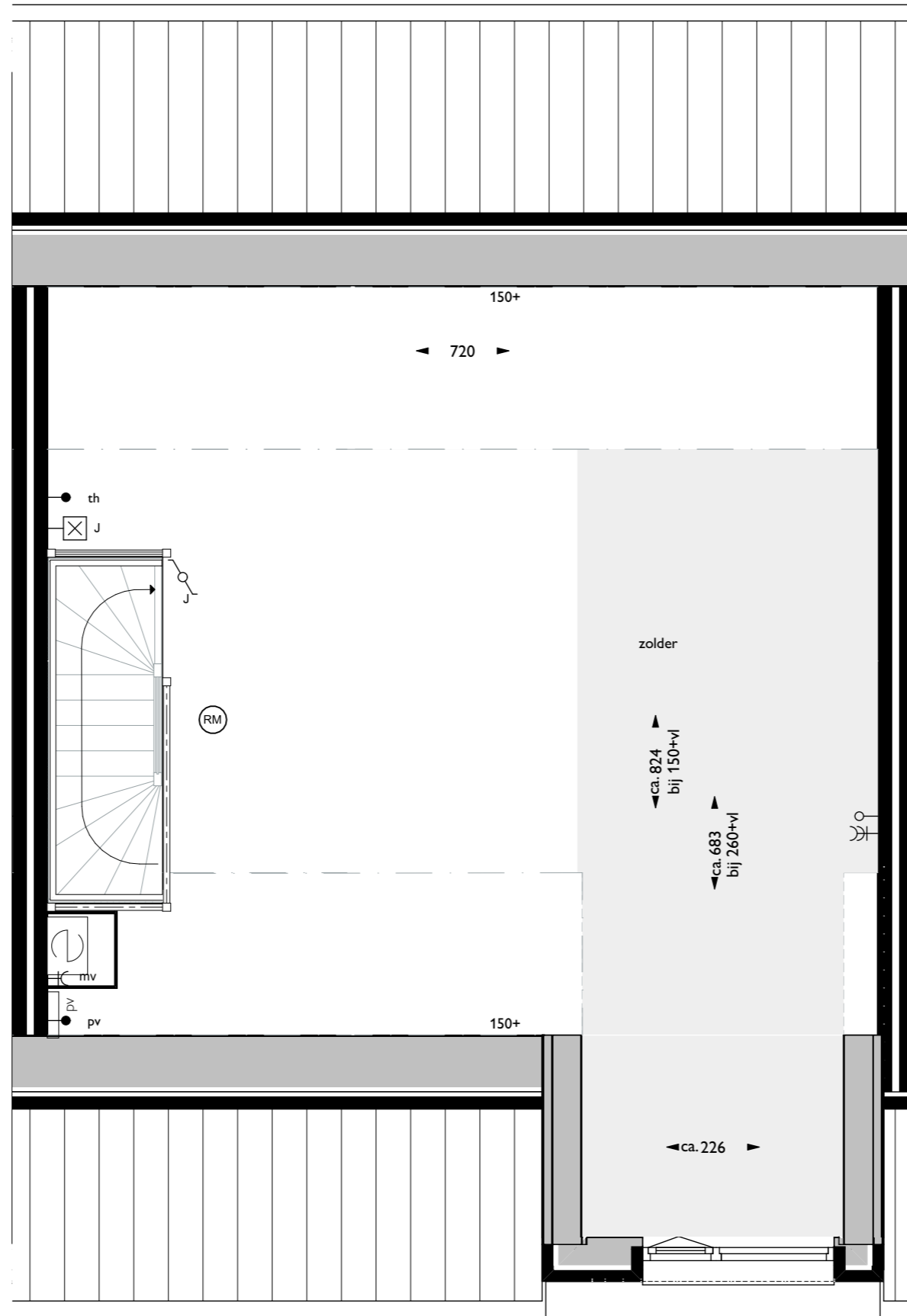
DOUMA
RAALTE

Bouwnummer:
64

Datum:
22-12-2023

Schaal:
1:50

begane grond



bouwnummer 64
verdieping



Bouwnummer:
64

Datum:
22-12-2023

Schaal:
1:50

verdieping